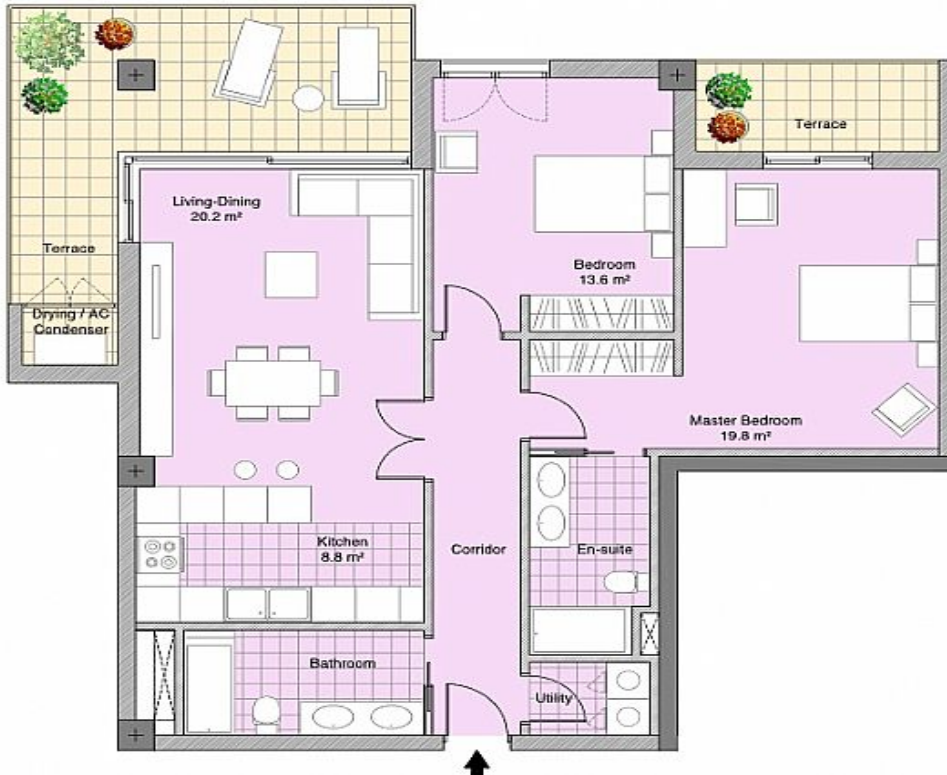


# HILLS PROPERTIES

OPENING DOORS FOR YOU

## CLEMENCE SUITES

Ref: G2050



### AT A GLANCE

- Air-conditioning
- Private terraces
- Quality specifications
- New Development
- Sea views
- Underground parking
- Indoor swimming pool
- Fitness centre
- High floor

### SPECIFICATIONS

Beds:	2
Baths:	2
Terrace area:	23m <sup>2</sup>
Living Area	87m <sup>2</sup>

### OUTGOINGS

Service charges:	TBC
Rates:	TBC

### DESCRIPTION

Clemence Suites - a beautiful collection of deluxe apartments and penthouses intelligently designed to offer the utmost in practical living. The apartments will boast high quality finishes throughout and enjoy numerous features including oak engineered wood flooring, generous fitted wardrobes in all bedrooms, panoramic balconies with glass balustrades, air-conditioning with reverse cycle climate control, under floor heating in the bathrooms, and avant-garde fully fitted kitchens. Residents will also benefit from private parking in the secure covered garage as well as fob access to the communal indoor swimming pool and state-of-the-art fitness centre. Just a 15-minute walk from the city centre, 10-minute walk from the Gibraltar Airport and Frontier and a 5-minute walk from beaches, everything is close at hand. Clemence Suites represents an excellent opportunity to get in early on the highly anticipated radical transformation of the Eastside, offering luxury living at remarkable value. Completion expected in Spring 2019. For more information on the project please visit [www.clemencesuites.com](http://www.clemencesuites.com)

**£409,950**

Whilst every effort is made to ensure the accuracy of information, no guarantee is expressed or implied and no representations or warranties are made as to such accuracy, which may be subject to errors, omissions, price changes, prior sale and withdrawal without notice.