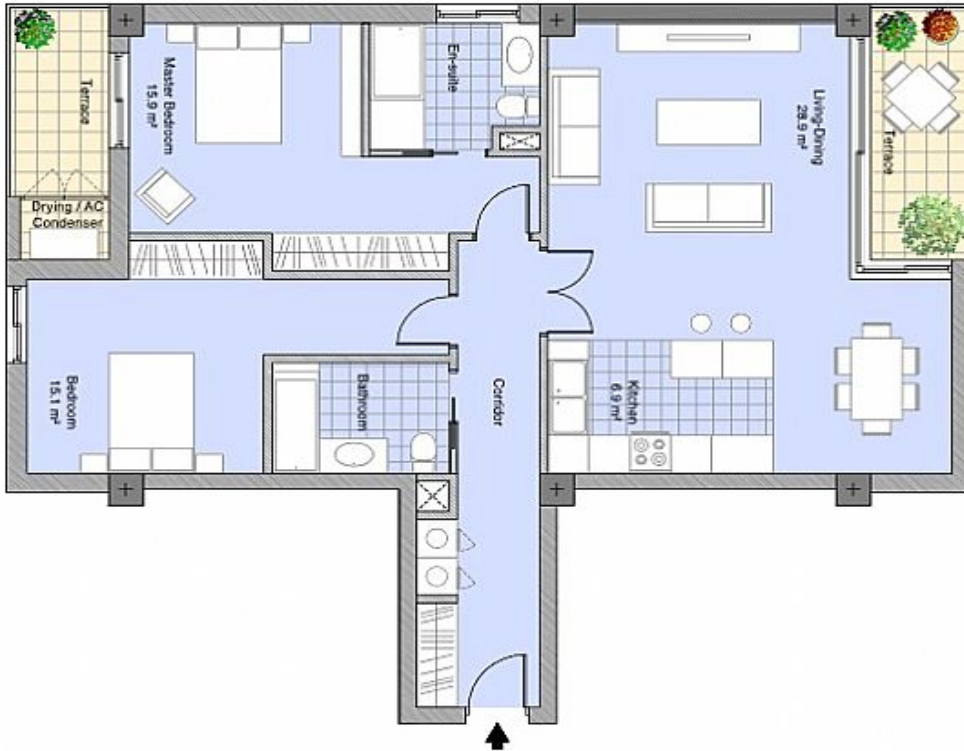


HILLS PROPERTIES

OPENING DOORS FOR YOU

CLEMENCE SUITES

Ref: G2028



AT A GLANCE

- Air-conditioning
- Quality specifications
- Indoor swimming pool
- Fitness centre
- Rock & Sea views
- Private balconies
- Suitable for Cat 2
- Spacious living areas
- High floor
- Suitable for HEPSS

SPECIFICATIONS

Beds:	2
Baths:	2
Terrace area:	12m ²
Living Area:	90m ²

OUTGOINGS

Service charges:	£3,054 per annum
Rates:	£755 per annum

DESCRIPTION

Luxury apartment for sale in Clemence Suites. Comprising two bedrooms and two bathrooms (master ensuite), this property has c.90sqm of living area and enjoys quality finishes throughout. Boasting numerous features including reverse cycle air-conditioning, two private balconies, oak engineered wood flooring, and a high specification fully fitted kitchen, it further benefits from access to the communal gym and indoor swimming pool. Includes a private covered parking space. Sold on the open market with no residency restrictions. Leasehold. Suitable for Cat 2 and HEPSS. Viewing is highly recommended.

£585,000

Whilst every effort is made to ensure the accuracy of information, no guarantee is expressed or implied and no representations or warranties are made as to such accuracy, which may be subject to errors, omissions, price changes, prior sale and withdrawal without notice.